

POP & LOCK[®] Installation Instructions

Tailgate Lock PL3300

Dodge Ram 1500, '94-'01
2500 and 3500, '95-'02

Contents:

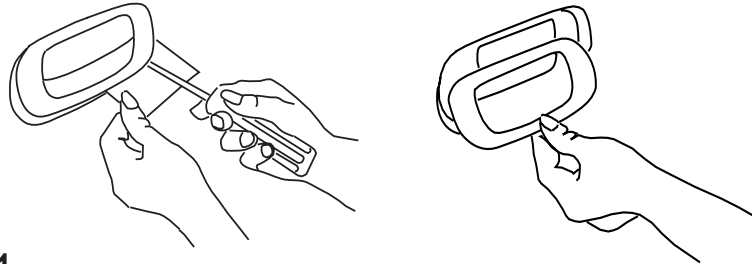
Lock Assembly, 2 keys
10-24 One-Way Screw
10-24 Hex Bolt
Rectangular Washer
Foam Pad
Instructions, Warranty Card

Tools Required:

30 Torx Driver
Small Screw Driver
Adjustable Wrench

Tech Support:

Call 1-800-342-5911

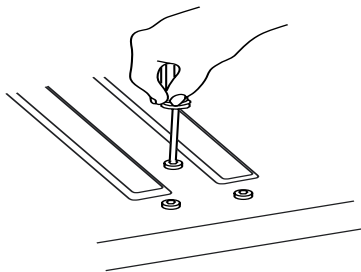


1.

Using the enclosed foam pad to protect the tailgate, carefully pry out the plastic insert with a small screw driver. The insert is retained by four 1/4 inch wide latches located underneath the upper and lower edges, approx. 1 inch away from the corners. The upper ones are fixed, but the lower ones flex. Insert the screw driver approx. 1 inch inside one of the lower corners to push the latch in and pry up until that corner lifts up, then do the other side. Now you can pull the insert away from the upper edge.

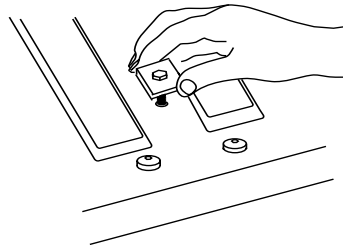
NOTE: Don't worry if one of the latches breaks off since the POP&LOCK will retain the insert securely.

NOTE: POP&LOCK is designed to secure the passenger side latch. You may experience that the drive side latch can open due to the flex in the handle, but the tailgate will still remain locked.



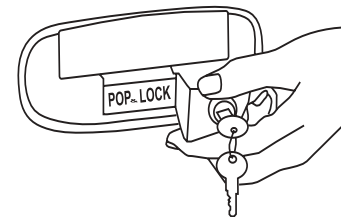
2.

Lower the tailgate and remove the lower of the three bolts and loosen the other two.



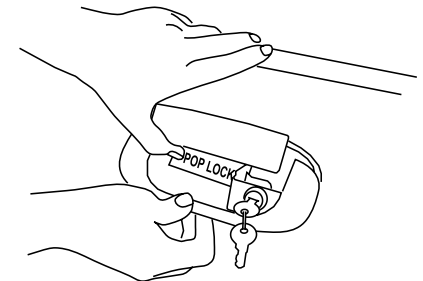
3.

Insert the 10-24 hex head screw and rectangular washer in place of the bolt you just removed.



5.

Raise the tailgate, lift the handle, insert the POP&LOCK and capture it with one or two turns of the 10-24 screw.



5.

Lift the handle again and slide the plastic insert under the POP&LOCK until it snaps into place.

Tighten all screws.