

Contents:

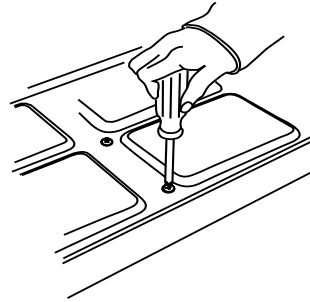
Lock Assembly
Instructions
Warranty Card

Tools Required:

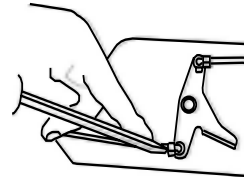
Phillips Head Screw Driver

Tech Support:

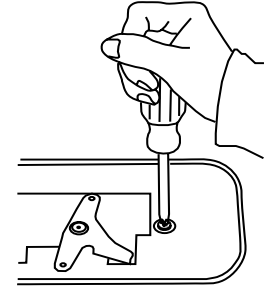
Call 1-800-342-5911



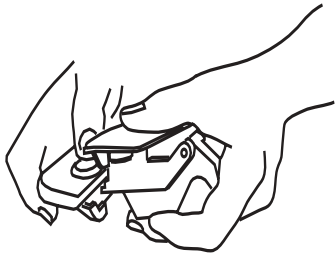
1.
Unscrew the 8 access panel screws and remove panel



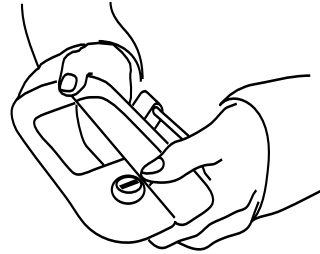
2.
Carefully unclip the plastic rod retainers off using a screw driver and remove rods from the scissor.



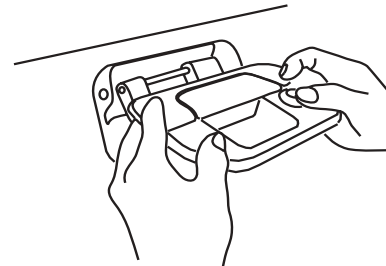
3.
Unscrew the two handle mounting screws and remove handle



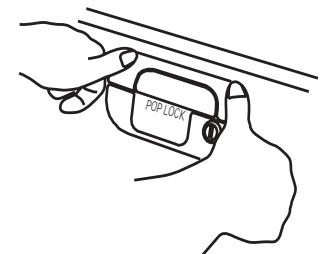
4.
Join the handle and the POP&LOCK. They go together like a tongue and groove.



5.
Push the handle firmly down onto the POP&LOCK until they fit together to form a tight assembly.



6.
Insert the handle and POP&Lock assembly into the tailgate.



7.
Push the assembly down to align it with the mounting holes. Reassemble all components in the reverse order.