

Contents:

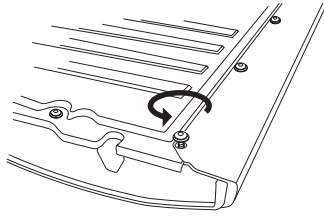
Lock Assembly
2 Washers, 2 Nuts
2 Rod Extenders
Instructions
Warranty Card

Tools Required:

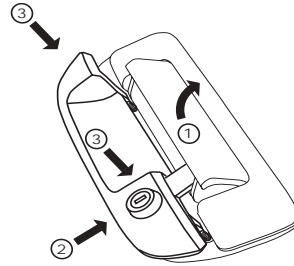
Screw Driver
T-30 Torx
7 mm Socket

Tech Support:

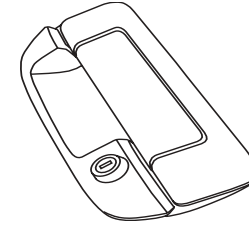
Call 1-800-342-5911



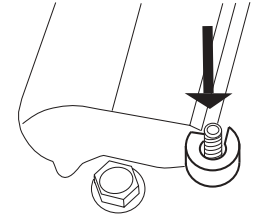
- 1.**
Unscrew the 15 access panel screws and remove panel



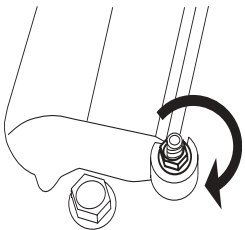
- 2.**
1. Lift Handle
2. Slip tongue under handle
3. Push studs into openings



- 3.**
Press the Lock down fully

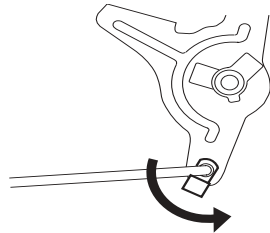


- 4.**
Turn tailgate over and put segmented washer over one of the studs

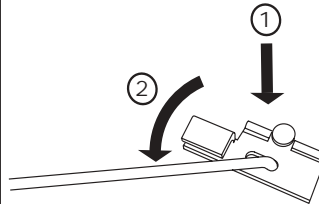


- 5.**
Screw the nut onto the stud.

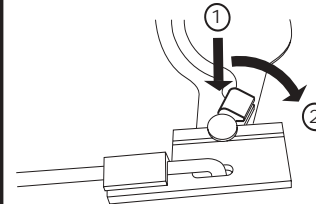
Repeat steps 4 and 5 on the other stud and tighten both nuts.



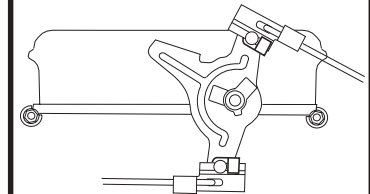
- 6.**
Rotate plastic rod retainer using a screw driver and remove rod.



- 7.**
1. Insert rod into Extender slot
2. Twist Extender to retain the rod.



- 8.**
1. Insert Extender onto arm.
2. Twist rod retainer over the Extender.



- 9.**
Repeat steps 6, 7 and 8 on the second rod to finish the installation.

NOTE: If the tailgate will not open when unlocked, remove the rod extenders.