

POP & LOCK[®]

Installation Instructions

Cabinet Lock PL5220

Toyota Tacoma 2005 and up

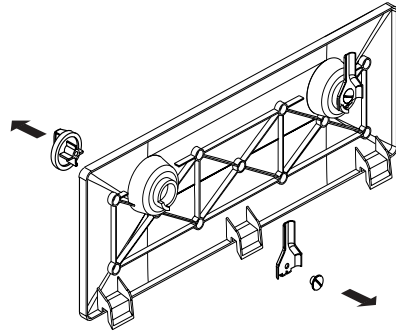
Contents:

Lock Cylinder, Lock Washer
Lock Screw, Lock Cam, Lock Clip
Stiffening Plate, 4 Carriage Bolt,
4 Nuts, Instructions, Warranty Card

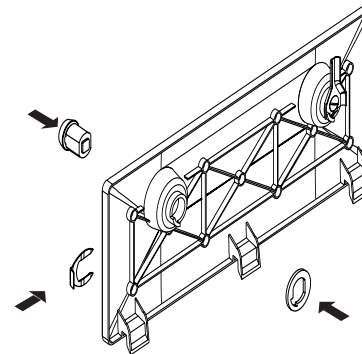
Tools Required:

Screw Driver, Power Drill with 5
MM drill bit, 11MM Socket

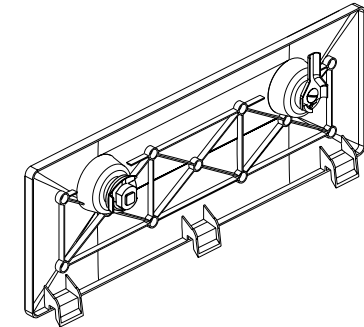
Tech Support: 1-800-342-5911



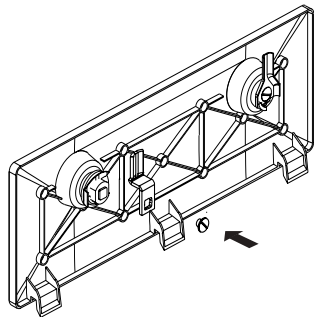
1.
Unscrew the Knob and the Cam



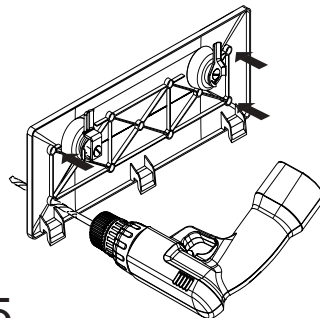
2.
Insert the Lock from the front and
the LockWasher from the rear and
the Lock Clip from the side



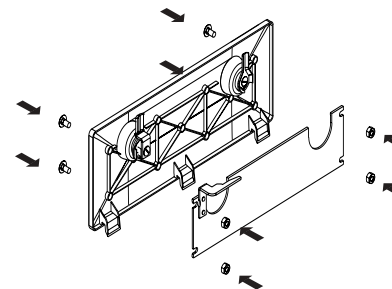
3.
Push the Lock Clip in fully to hold
the Lock and Washer in place.



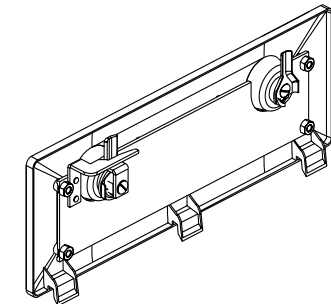
4.
Mount the Lock Cam to the Lock.
Turn the key to check the Cam
turns freely. You may have to pull
the Clip slightly for clearance.



5.
Drill four holes through the Cover
using the stiffening plate as a
template.
IMPORTANT: Don't drill through
the center bosses.



6.
Insert the 4 Carriage Bolts from the
front and mount the Stiffening
Plate with the four nuts.



7.
Tighten the four Nuts and turn the
key to check for smooth operation.